

# Serene Meadows

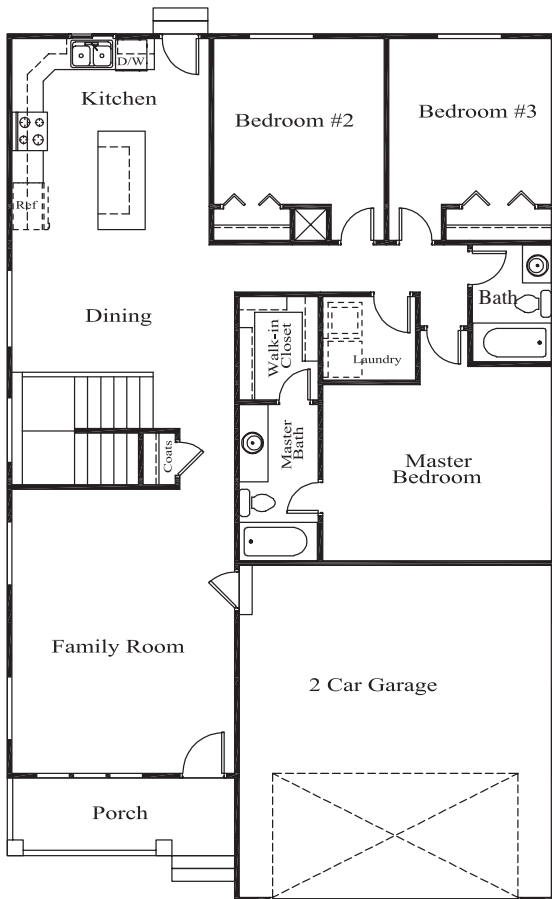
Lot 108

157 S. 270 W. American Fork

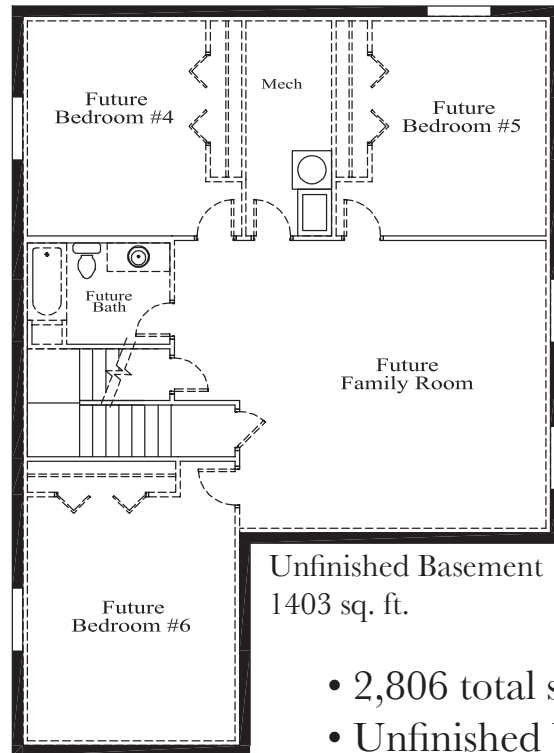
Better is the new bigger.

**CENTRAL BANK**  
Grant funds available!

\$202,800  
-\$3,000  
Central Bank Grant\*  
\$199,800



Main Floor  
1403 sq. ft.



Unfinished Basement  
1403 sq. ft.

- 2,806 total sq. ft.
- Unfinished basement
- 3 bedrooms, 2 baths
- 2-car garage
- Large front porch
- Fully landscaped



\* Central Bank grant funds are available on Serene Meadows homes. Please contact Georgetown Development at 801-374-0772 for more information.

Brett Frost 801-369-0428 or Steve Maddox, 801-602-9839  
www.georgetowndevelopment.com/serenemeadows

\* Price subject to change without notice. Illustrations are for the purpose of marketing only. Not all features apply to all plans. Builder reserves the right to make changes without notice. June 11, 2010

# Serene Meadows

# Lot 108

Georgetown homes feature fine quality in every respect. Standard plans can be modified to accommodate your individual needs. We build each home to be customized for the buyer and welcome your input when designing your home.

## Luxury & Convenience

- 3 bedrooms, 2 baths
- Kitchen open to dining room
- Master bedroom walk-in closet
- Main floor laundry room
- 2 car garage with garage door opener
- Covered front porch
- Pre-wired for telephone, cable TV, and Cat V computer networking

## Kitchen

- Alder or birch raised panel cabinets
- Laminate countertops
- Dishwasher
- Smooth top range
- Microwave/hood
- Disposal

## Bathrooms

- Alder or birch raised panel vanity cabinets
- Laminate counters with self-rimming sinks
- Full width mirrors above vanities
- Moen plumbing fixtures

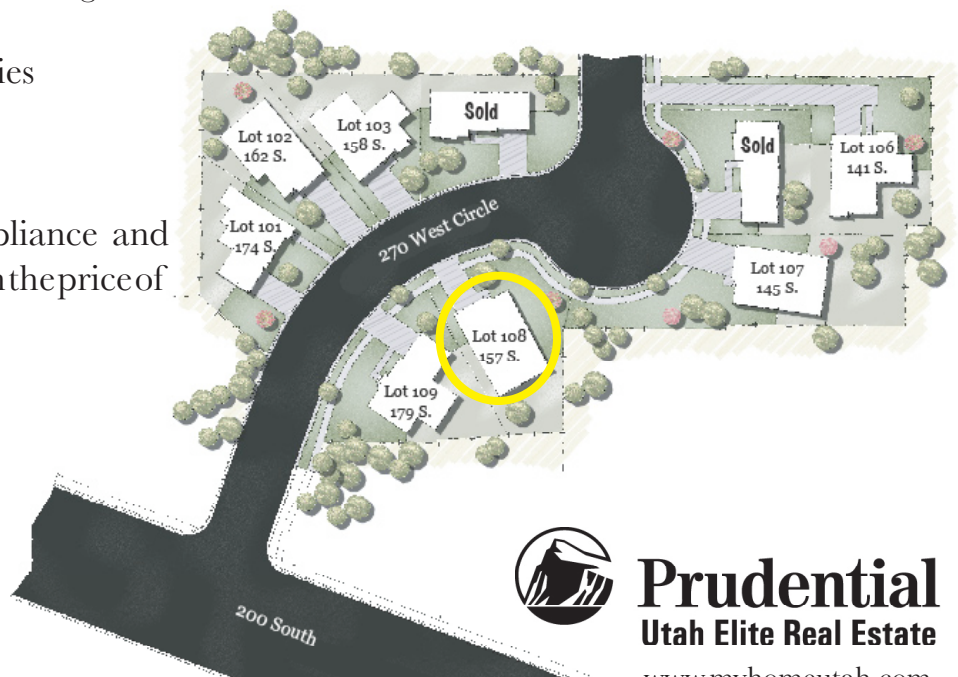
Generous flooring, lighting, appliance and cabinet allowances are included in the price of the home.

## Quality

- Individually styled exterior
- Low-maintenance exterior: stone & vinyl siding or stucco
- Rain gutters & downspouts
- Metal or fiberglass exterior doors
- 30 year asphalt shingles
- Deadbolt on front door
- Nickel interior door knobs
- Rounded drywall corners
- Vinyl frame double pane windows
- Insulated exterior doors
- R-38 attic insulation
- R-19 wall insulation
- 80% efficient gas furnace

## Optional Features

- Central Air Conditioning
- Finished basement
- Inquire about any other options you may be interested in.



**GEORGETOWN**  
Development  
www.georgetowndevelopment.com



**Prudential**  
Utah Elite Real Estate  
www.myhomeutah.com