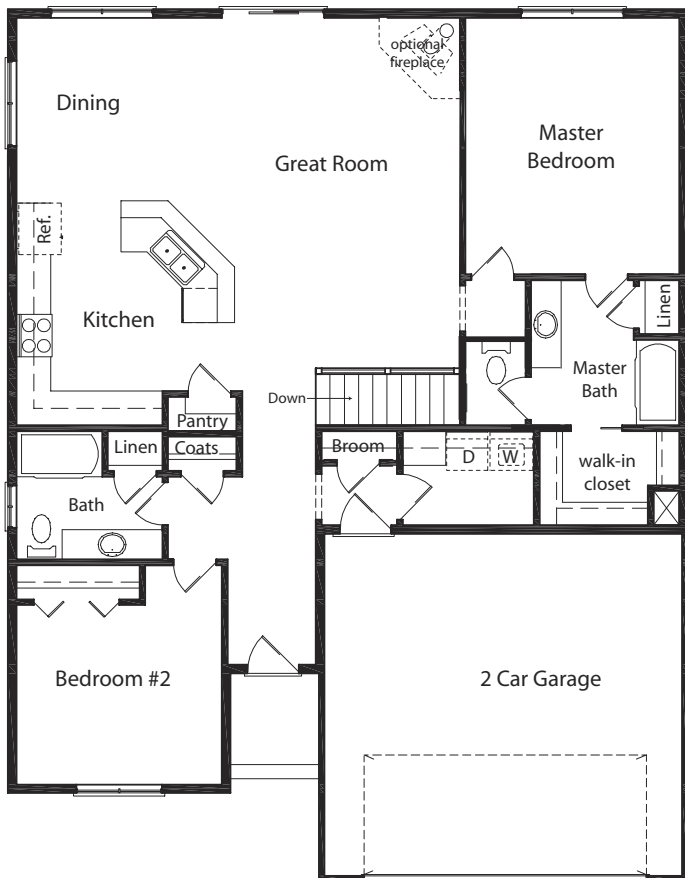




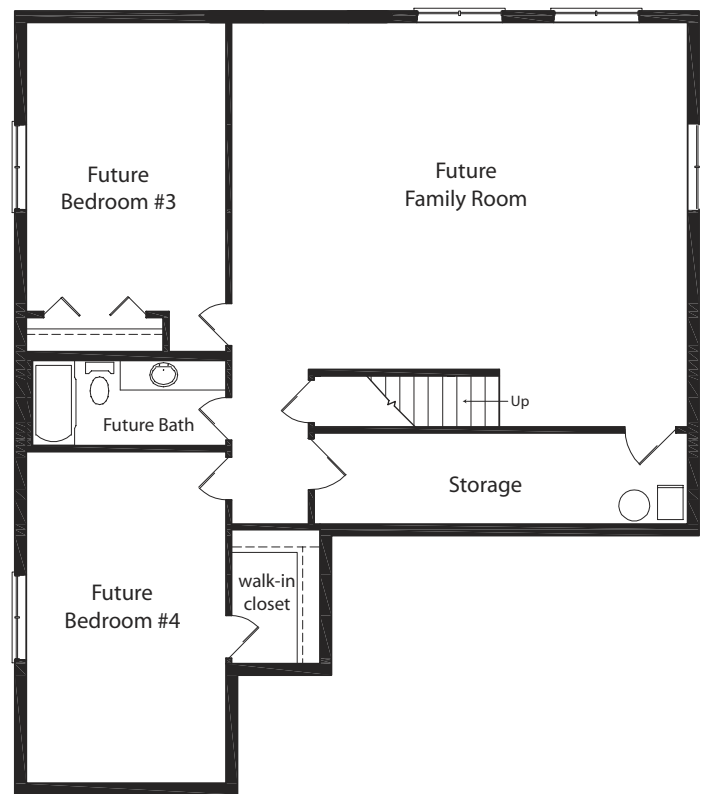
1 additional exterior style available

Dover

- 1461 finished sq. ft.
- 2 bedrooms, 2 baths
- Unfinished basement (1428 sq. ft.)
- 2-car garage
- Main floor master bedroom



Main Floor
 1461 sq. ft.



Unfinished Basement
 1428 sq. ft.

DOVER FEATURES

Luxury & Convenience

- 2 bedrooms, 2 baths
- Kitchen open to great room
- Hardwood railing on stairs
- 2 car garage with garage door opener
- Covered front porch
- Pre-wired for telephone, cable TV, and Cat V computer networking

Kitchen

- Alder or birch raised panel cabinets
- Dishwasher
- Smooth top range
- Microwave hood
- Disposal
- Pantry

Bathrooms

- Alder or birch raised panel vanity cabinets
- Laminate countertops with self-rimming sinks
- Full width mirrors above vanities
- Moen plumbing fixtures

Main Floor Master Suite

- Master bath with soaking tub
- Large master bedroom walk-in closet

Quality

- Individually styled exterior
- Low-maintenance exterior: brick or stone & vinyl siding
- Rain gutters & downspouts
- Metal or fiberglass exterior doors
- Concrete patio
- 30 year asphalt shingles
- Kickplate on front door
- Thumb latch & deadbolt on front door
- Nickel interior door handle sets
- Rounded drywall corners
- Vinyl frame double pane windows
- Insulated exterior doors
- R-49 attic insulation
- R-19 wall insulation
- 80% efficient gas furnace

Optional Features

- Fireplace in great room
- Additional brick, stucco or stone on exterior (standard Dover plan includes brick or stone & vinyl siding)
- Central Air Conditioning
- Finished basement

Generous flooring, lighting, appliance and cabinet allowances are included in the price of the home.

Georgetown homes feature fine quality in every respect. Standard plans can be modified to accommodate your individual needs. We build each home to be customized for the buyer and welcome your input when designing *your* home.

Call Frankie or Mary at Etzel Realty for information
435-637-6777